



LINDENWIRT

Peter-Rosegger-Straße 125
8052 Graz
T +43 316 281901
www.lindenwirt.at

The Lindenwirt is a place with history: Already in the year 1896, the inn was mentioned as a destination inn by Markus Grabitzer (great-grandfather of the current owner Carmen Poglitz-Raffler). Even back then, it was popular for its traditional cuisine. The generations that followed preserved this heritage, cooking up their own success on historic grounds. Here, seasonally aligned dishes dominate, featuring only the best local products.

ACCESSIBILITY

Public Transport

Bus stop „Peter-Rosegger-Straße“ is 150 meters away;
Please use the route planner of the Verbundlinie Steiermark:
<https://verkehrsankunft.verbundlinie.at>

Parking

- sufficient asphalted parking spaces in front of and next to the house
- partially with a slight slope
- **no designated accessible parking spaces**

ACCESS AND ENTRANCE

- The barrier-free entrance is the main entrance.
- **3 unsimilar steps** to the entrance, 7 or 15 cm high, depth 28 or 29 cm
- bypassable via an asphalted ramp: **18% gradient!** (Norm max. 10%), width 118 cm, wheel guards available
- fall protection changes height: **100 cm or 42 cm** (Norm 85 - 90 cm)
- flower trough and parked cars obstruct access to the ramp
- wind lobby with 2 automatic glass sliding doors (**insufficiently marked**)
- doors open prematurely and close with a delay
- at least 150 cm of space in front of and behind the doors, door clearance at least 120 cm, no threshold
- dirt-trapping mat easily rollable



Access



Entrance

INTERIOR

- flooring easily rollable
- sufficient passage widths, one narrow point at the bar with a width of 90 cm
- tables and chairs movable, chairs with a seat height of 48 cm
- different tables: 90 x 90 cm, height under the table 70.5 cm, table edge height 74 cm, under-table depth up to the central foot **41 cm** (Norm min. 60 cm)
- smaller tables 70 x 70 cm, height under the table 70.5 cm, table edge height 74 cm, under-table depth **31.5 cm**
- ramp connects 2 rooms, slightly curved, **10 - 12% gradient**, flooring easily rollable



Interior area

© Lindenerwirt - RP photography



Interior area



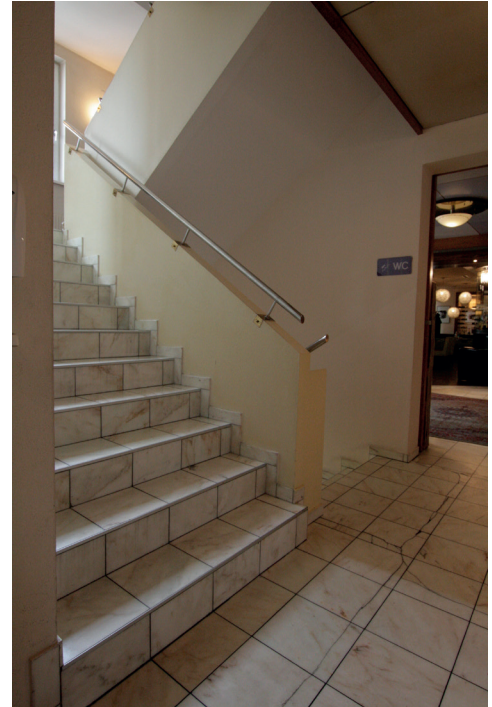
ramp 10-12% gradient

ELEVATOR (TO THE RESTROOMS IN THE BASEMENT)

- car **width 100 cm**, depth 140 cm (Norm 110 x 140 cm)
- door clearance **80 cm** (Norm 90 cm), 150 cm of space in front of the elevator door
- operating elements at a height of 100 - 120 cm
- **no acoustic announcement or signal**
- handrail at a **height of 100 cm** (Norm 85 - 90 cm)
- mirror available, **but too high**

STAIRCASE (TO THE RESTROOM IN THE BASEMENT)

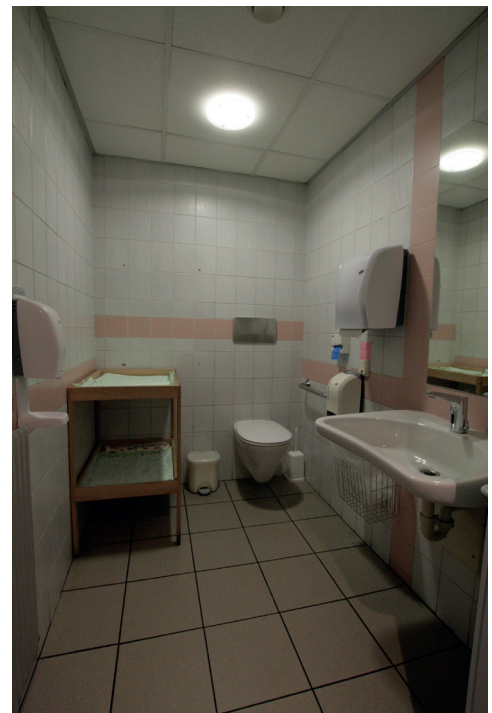
- step height **17.5 cm** (Norm max. 16 cm), all steps equally high
- step width 134 cm, depth 27.5 cm
- handrail on one side at a height of **100 cm** (Norm 85 - 90 cm), not extending horizontally 30 cm beyond the end of the staircase at the beginning and end of the staircase



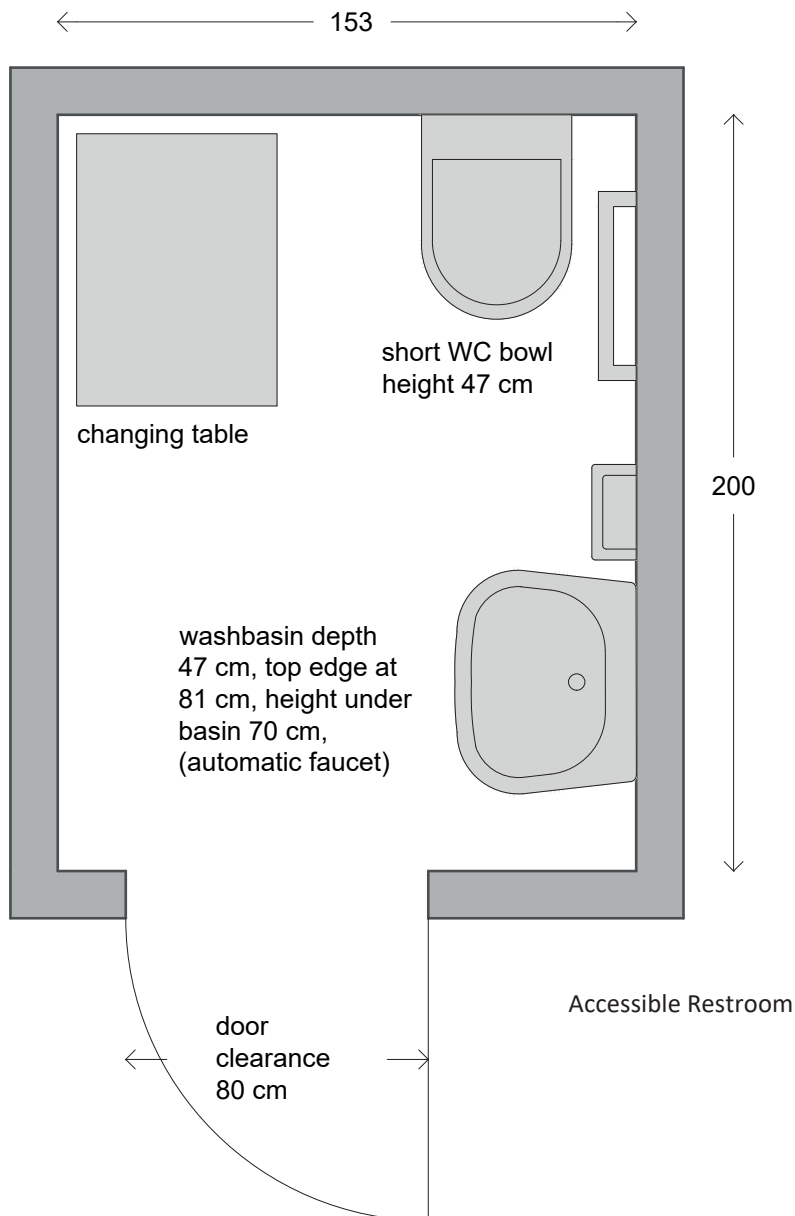
Staircase

**ACCESSIBLE RESTROOM (IN THE BASEMENT)
 for both genders (unisex)**

- space in front of the door at least 150 cm
- swinging door with door handle, door clearance 80 cm
- lateral approachability next to the door handle inside **only 18 cm** (Norm min. 50 cm), outside at least 50 cm
- room dimensions: 153 x 200 cm, **turning radius of 150 cm not given**
- WC height: 47 cm, **short bowl, no backrest**
- WC approachability from the front, **75 cm of space** (Norm min. 120 cm)
- without a changing table, approachability from the left with 94 cm of space possible
- one short horizontal wall grip at a height of 78 cm
- toilet paper and flush reachable while seated
- large sink with a depth of 47 cm, width of 66 cm, and height under the sink of 70 cm; drain trap **not flat**
- sink top edge at 81 cm, automatic faucet
- mirror bottom edge at 95 cm
- towel holder at a height of **116 cm** (Norm max. 110 cm)
- **no emergency bell available**



Accessible Restroom



BEER GARDEN

- access from the restaurant: passage with a width of 86 cm
- followed by a **heavy wooden swinging door** with a clearance of 86 cm
- folding chairs with a seat height of 47 cm
- tables 80 x 80 cm in size, height under the table 69 cm, table edge height 70 cm, under-table depth up to the central foot **37 cm** (Norm min. 60 cm)

ADDITIONAL INFORMATION

- high chairs available
- changing facilities in the accessible restroom
- service dogs allowed

As of April 2023, all information without guarantee.