



CAFÉ RESTAURANT SORGER

Sporgasse 4
 8010 Graz
 T +43 316 81916021
www.sorgerbrot.at

Resistance is futile! And why would you want to resist the wonderful temptations of the Sorger bakery? Nothing is better than being seduced by the tasty food from Sorger. The Sorger bakery in the heart of Styria, which has 26 branches, fulfils all its customers' wishes. Whether it's fresh bread and pastries, filling cakes or delicious pies, coffee or specialties of the day, there is something for every taste and for every time. And even on Sunday!

At the branch in Sporgasse, you can enjoy all kinds of great food – from coffee variations and confectionery through to a variety of organic products and lunch menus – seven days a week. The menu includes home cooking as well as international dishes. And for those with a sweet tooth, homemade pastries and a wide range of ice cream specialties made from organic milk are available.

ACCESSIBILITY

Accessibility by public transport

Please use the route planner of the Styria Public Transport Network (Verbundlinie Steiermark):
<https://verkehrsankunft.verbundlinie.at/>

Parking

- 2 designated disabled parking spaces and/or short-stay parking zone at Bischofsplatz (approx. 350 m away)
- 2 designated disabled parking spaces at Raubergasse (approx. 350 m away) and/or short-stay parking zone around Raubergasse
- Kastner & Öhler underground car park, approx. 150 m away

ACCESS AND ENTRANCE

Please note that Café Restaurant Sorger is located in a street with a slope! Since it is a pedestrian zone, it is not possible to visit it directly by car!



Entrance

- **Access with slope:** Pavement asphalted, road with cobblestones
- Due to the slope of the access path, the entrance has a slight **cross slope**
- Small threshold of less than 1 cm
- No door, open passage
- Dust control mat suitable for wheelchairs
- The café and restaurant area is accessed via the bakery



© Sorger – Werner Krug

Interior area

INTERIOR AREA

- Flooring suitable for wheelchairs
- Coat hooks for wheelchair users are **too high**
- Bakery counter: 130 cm high, visible at 100 cm
- Tables and chairs movable, benches aren't
- Round tables: under-table wheelchair access 70 cm, upper edge of table 75 cm, with centre table leg
- Rectangular tables: Lower edge 70 cm, with centre table leg, under-table wheelchair access only to depth of 30 cm



© Sorger – Werner Krug

Interior area

OUTDOOR DINING AREA:

The outdoor dining area is located in the middle of Sporgasse. This has a slope and is also covered with cobblestones. This means that the tables and chairs are difficult to move, and they are also arranged quite closely. Due to these circumstances, the outdoor dining area **cannot** be described as **accessible**.

TOILET (UNISEX):

vestibule:

- Hinged door with lever handle
- Clear door width 80 cm
- Washbasin in vestibule: Top upper edge 86 cm, lower edge 75 cm, depth 54 cm
- Mirror in vestibule is too high for wheelchair users (lower edge at height of 120 cm)
- Turning circle of 150 cm available



Accessible WC

WC:

- Hinged door with lever handle
- Clear door width 80 cm
- **Turning circle of 150 cm not available**
- **WC height: 50 cm**
- WC accessible from the right, on this side at least 110 cm space
- 1 folding support rail and 1 angled grab bar, standard height (75–85 cm)
- Emergency bell available (button)
- Fold-up baby changing table available

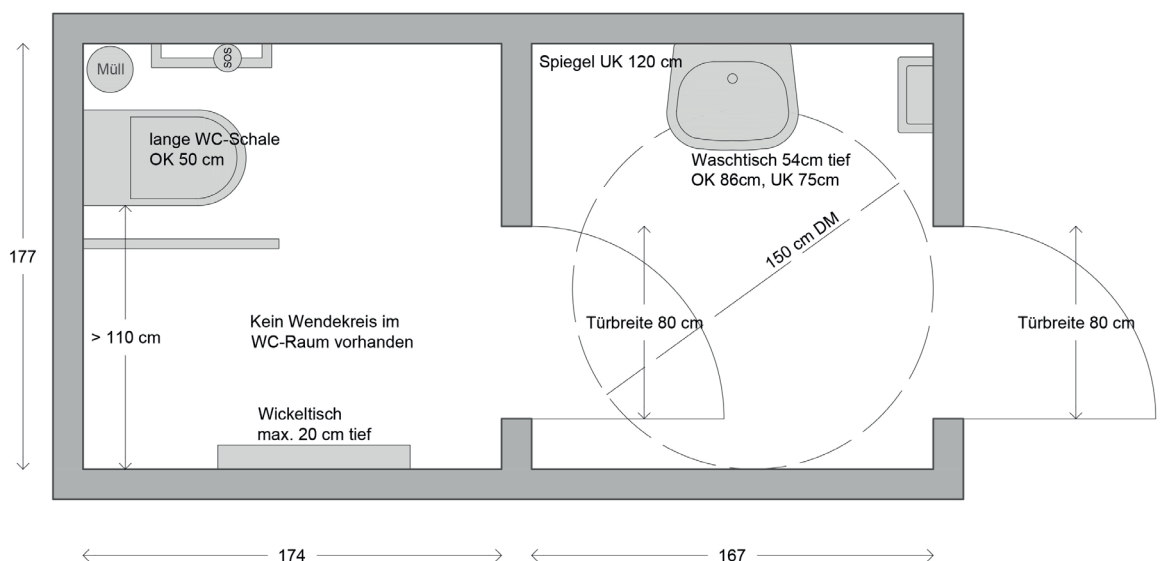
ADDITIONAL INFO

- Non-smoking facility
- Smoking permitted in the outdoor dining area
- Children’s corner
- Children’s chairs available



Accessible WC

Validity: June 2018, errors and omissions excepted



Sorger Sporgasse

WC layout plan