



BUSCHENSCHANK SATTLER

Rohrbachhöhe 20
 8010 Graz
 T +43 316 391021-10
www.buschenschank-sattler.at

Buschenschank Sattler, which is situated in the countryside but not far from the city, and has views of the Stiftingtal valley and the Schöckl mountain region, has been popular with guests young and old in and around Graz since 1989. With strong partners from the local region, the bistro run by the Sattler family, together with the adjacent winery, prioritises serving high-quality food. The offer ranges from the traditional ploughman's lunch through to a Styrian buffet with roast ribs, ham hock and a wonderful pork roast. A spacious children's playground also makes the little ones happy.

ACCESSIBILITY

Accessibility by public transport

Please use the route planner of the Styria Public Transport Network (Verbundlinie Steiermark):
<https://verkehrsauskunft.verbundlinie.at>

From the bus stop, there is a **steep ascent** along an asphalted road for approx. 450 m.

Parking

- The parking spaces are situated in front of the entrance to the farmhouse, but aren't accessible to disabled visitors due to the gravel, longitudinal slopes and cross slopes! However, on request, it is possible to drive to the entrance, where the path is asphalted and/or paved and level.

ACCESS AND ENTRANCE

- Access asphalted and level
- The accessible entrance is the main entrance
- Dust control mat suitable for wheelchairs
- Short ramp (approx. 20 cm long) in front of the entrance door, less than 6 % incline
- Hinged door with lever handle, force required to open: medium



Access and accessible parking



Entrance

- Clear door width 88 cm, door stop max. 2 cm
- Sufficient space in front of and behind the door; 60 cm accessibility

INTERIOR AREA:

- Flooring suitable for wheelchairs (tiles)
- Passage widths not generous but sufficient
- Counter height: 120 cm
- Tables and most benches movable (there are no chairs)
- Seat height of benches: 45 cm
- Under-table wheelchair access height: 70 cm, upper edge 75 cm
- Tables with crossbeams, under-table wheelchair access only up to 30 cm
- Ramp to the 2nd guest room: 130 cm in length, **14 % incline**



Guest room 1

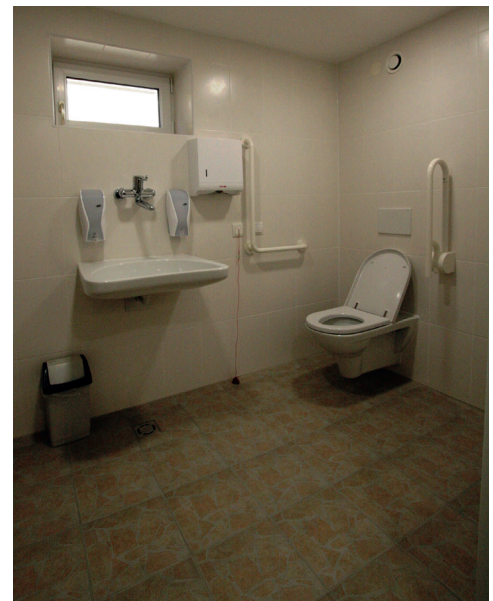


Guest room 2

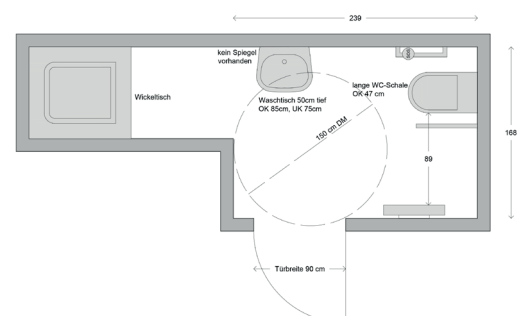
TOILET (WITH EUROKEY)

Between 1st and 2nd guest room, accessible via long, wide corridor

- Marked; unisex
- Eurokey available in the Buschenschank
- Hinged door with lever handle
- Clear door width 90 cm
- Turning circle with diameter of 150 cm available
- WC height: 47 cm
- WC accessible from the right, 89 cm of space on this side (standard 90 cm)
- Long WC bowl with locking bar
- 1 folding support rail and 1 angled grab bar at a height of 85 cm
- **Folding support rail with length of 60 cm too short**
- Washbasin 60 cm wide, 50 cm deep, lower edge 75 cm, upper edge 85 cm
- **Tap fitting very high**
- Soap and disinfectant available
- No mirror available
- No clothes hook
- Emergency bell available
- Baby changing table available



Accessible WC



WC layout plan

OUTDOOR DINING AREA:

- In front of the entrance, paved (no gravel)
- Beer garden tables and benches, under-table wheelchair access
- Tables and benches can be moved

ADDITIONAL INFO

- Non-smoking facility
- Smoking permitted in the outdoor dining area
- Dogs allowed
- Children’s play area available



Outdoor dining area

Validity: October 2018, errors and omissions excepted