



GÖSSER BRÄU

Neutorgasse 48

8010 Graz

T +43 316 829909

office@goesserbraeugraz.at

www.goesserbraeugraz.at

Not far from the main square at Gösser Bräu Graz, you can enjoy a refreshing glass of Gösser beer fresh from the brewery and fresh from the barrel, as well as traditional dishes with regional produce. You can expect to find an atmosphere that reflects the heart of our beautiful country: In a harmonious ensemble, traditional and rustic meets with boundless hospitality, and in a perfectly matched essence of modernity, provides a successful treat for all your senses.

The Gösser Bräu Graz stands for a beer brewing tradition 115 years, and focuses on trends – the latest highlight being the smoked ribs that are prepared in the beer garden.

ACCESSIBILITY

Accessibility by public transport

Please use the route planner of the Styria Public Transport Network (Verbundlinie Steiermark): <https://verkehrsankunft.verbundlinie.at/>

Parking

- 2 designated disabled parking spaces in the Nelkengasse/corner of Kaiserfeldgasse, approx. 50 m from the side entrance
- Designated disabled parking space at Neutorgasse/corner of Joanneumring, approx. 100 m from the restaurant on the other side of the street
- Short-stay parking zone in the surrounding area

ACCESS AND ENTRANCE

- The accessible access is the **side entrance on Kaiserfeldgasse**
- The door is always open, **door stop approx. 1.5 cm**
- Ramp with 6 % incline, asphalted, width 120 cm
- Access area of 150 x 150 cm at the beginning and end of the ramp
- **No handrail** at the ramp, wheel deflector available
- Electric hinged door (door opener is manually operated)
- Clear door width 95 cm, **1 cm door threshold!**
- Door is always open in the warm time of year
- Dust control mat suitable for wheelchairs, carpet behind the entrance door **not so good**



Access ramp



Entrance

INTERIOR AREA

- **Restaurant area on the 1st floor not usable for wheelchair users, as no lift available**, enough tables on the ground floor, though
- On the ground floor, all rooms are accessible without steps, the doors between the different rooms are always open and at least 90 cm wide
- **Not all tables have under-table wheelchair access** (in the bar area, the tables have a footrest on all 4 sides and in the new part with the new furnishings, there are only high tables)
- Tables and chairs are movable (some fixed benches)
- Table height: Lower edge 70 cm, due to a centre bar, under-table wheelchair access only up to a depth of 30 cm



Tables with under-table wheelchair access

TOILET

- In the immediate vicinity of the accessible entrance **not marked**
- Accessible toilet separated from the other WCs
- Hinged door with lever handle, clear door width 90 cm
- Length 223 cm/width 160 cm, turning circle of 150 cm available
- WC height 47 cm



Toilet

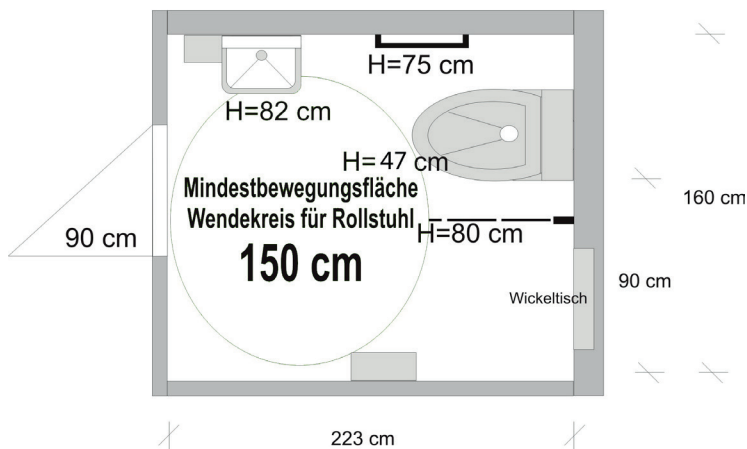
- WC accessible from the right, 90 cm space at the side
- Folding support rail on the right, height 80 cm, **too short and not stable**
- Angled grab bar on the left, **mounted the wrong way around** (short bar vertical, long bar horizontal), the horizontal part is 75 cm high
- Paper not easy to reach while seated
- Upper edge of washbasin 82 cm, single lever mixer tap
- Lower edge of mirror 93 cm
- Clothes hook at a height of 115 cm
- Baby changing table (recessed in wall), folds upwards
- **No emergency bell available**



Toilet

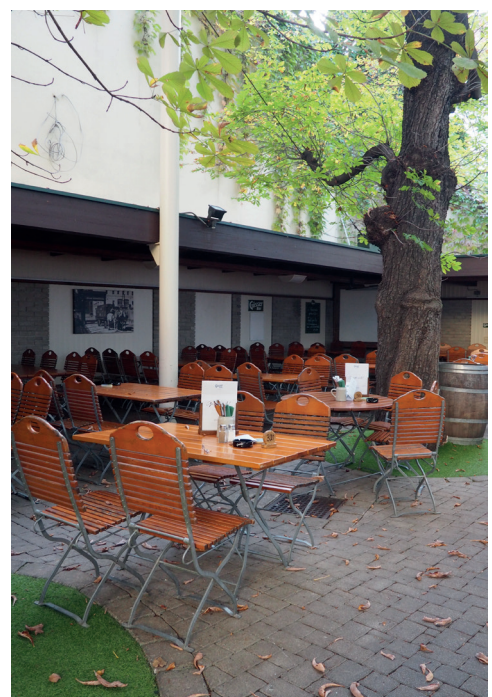
WC Plan

Gösser Bräu



OUTDOOR DINING AREA

- Access same as accessible entrance from Kaiserfeldgasse
- Paved surface
- Tables and chairs movable
- All tables (classic beer garden tables) – lower edge 74 cm, **no under-table wheelchair access** because of cruciform base (folding tables)
- Table top 82 cm x 120 cm



Outdoor dining area

ADDITIONAL INFO

- Guide dogs allowed
- Staff happy to read menu to blind people
- Colouring books, pencils and toy boxes are available for children
- Special children's menus
- Baby changing table in the disabled WC

Validity: January 2020, errors and omissions excepted,
Graz Tourism in cooperation with Hartberg Disability Support Group